

Aloha

Welcome to the Hawaii Department of Transportation's

Community Informational Meeting

for the Master Plan Update for

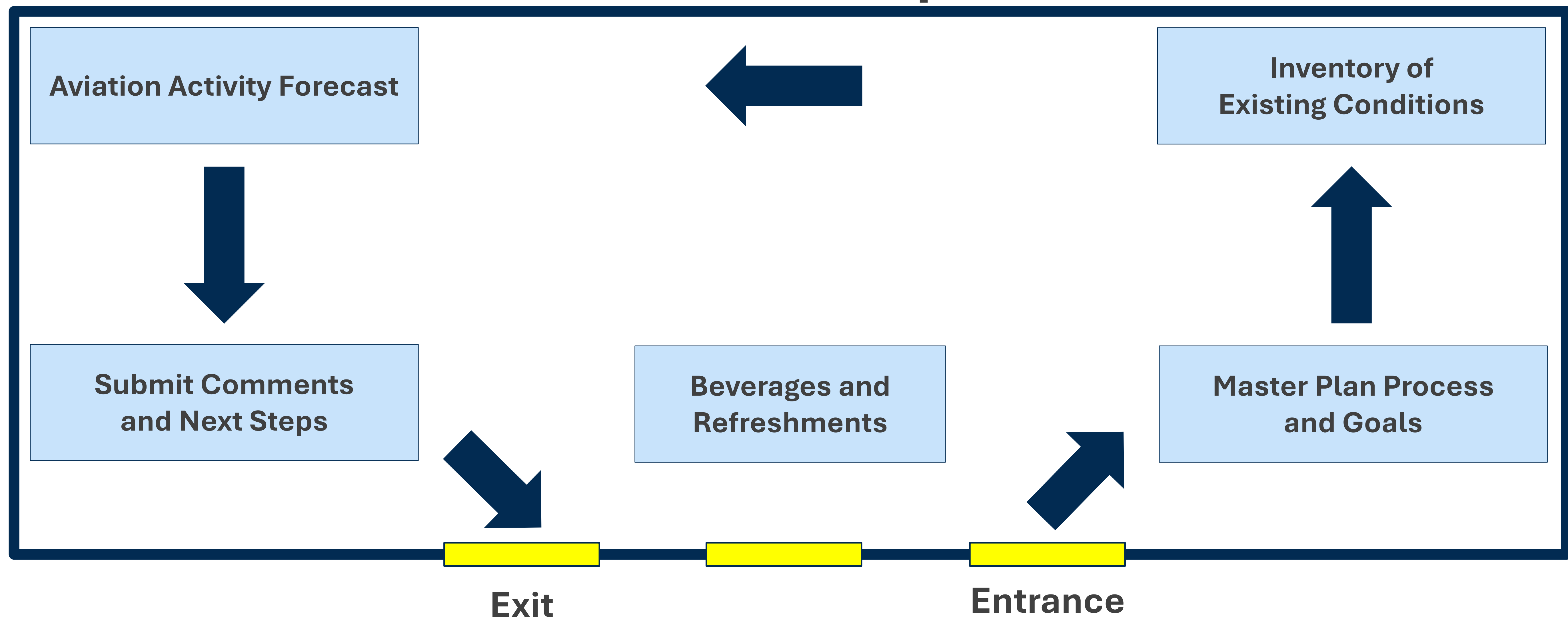
Ellison Onizuka Kona International Airport at Keahole (KOA)



Instructions

Please sign in and proceed inside to learn about
KOA's master plan update.

Exhibit Map



Scan the QR code to visit our project website!

What is a Master Plan?

An airport master plan is a comprehensive, long-range planning document that defines the framework for future developments at the airport, ensuring that infrastructure and facilities are aligned with projected aviation demand.



EVALUATE EXISTING FACILITIES

Document and review current infrastructure to identify strengths and gaps



FORECAST FUTURE NEEDS

Estimate future demand for passengers, cargo, and aircraft operations



EXPLORE ALTERNATIVES

Consider different development options and select the best path forward



COMMUNITY ENGAGEMENT

Involve the public and stakeholders to reflect local values and priorities

Master Plan Team



Prime Consultant



Terminal Planning



Public Outreach



Airports GIS Survey



Market Assessment



Field Survey



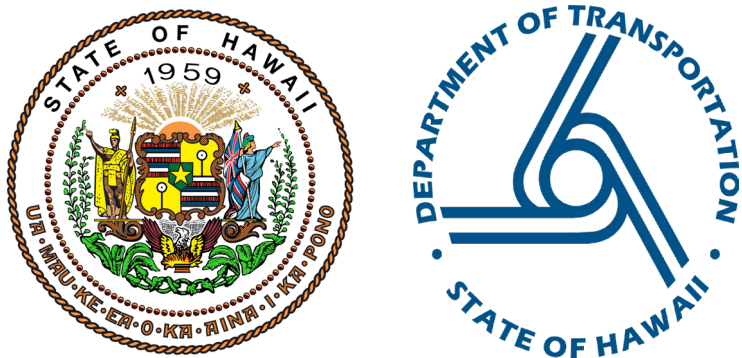
Traffic Data Collection



Cost Estimating



Financial
Implementation Plan



Master Plan Process

Inventory of Existing Conditions



Inventory and document existing airport facilities and operations to establish accurate baseline conditions

Forecast and Facility Requirements



Analyze projected growth in passengers, cargo, and aircraft operations to determine the types and sizes of facilities needed for future demand

Alternatives Development and Evaluation



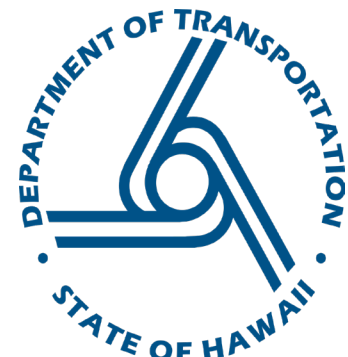
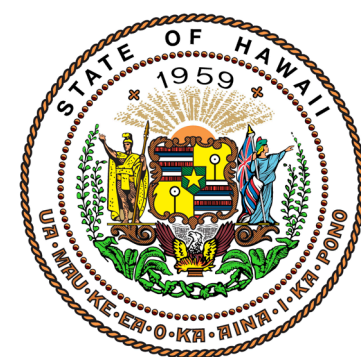
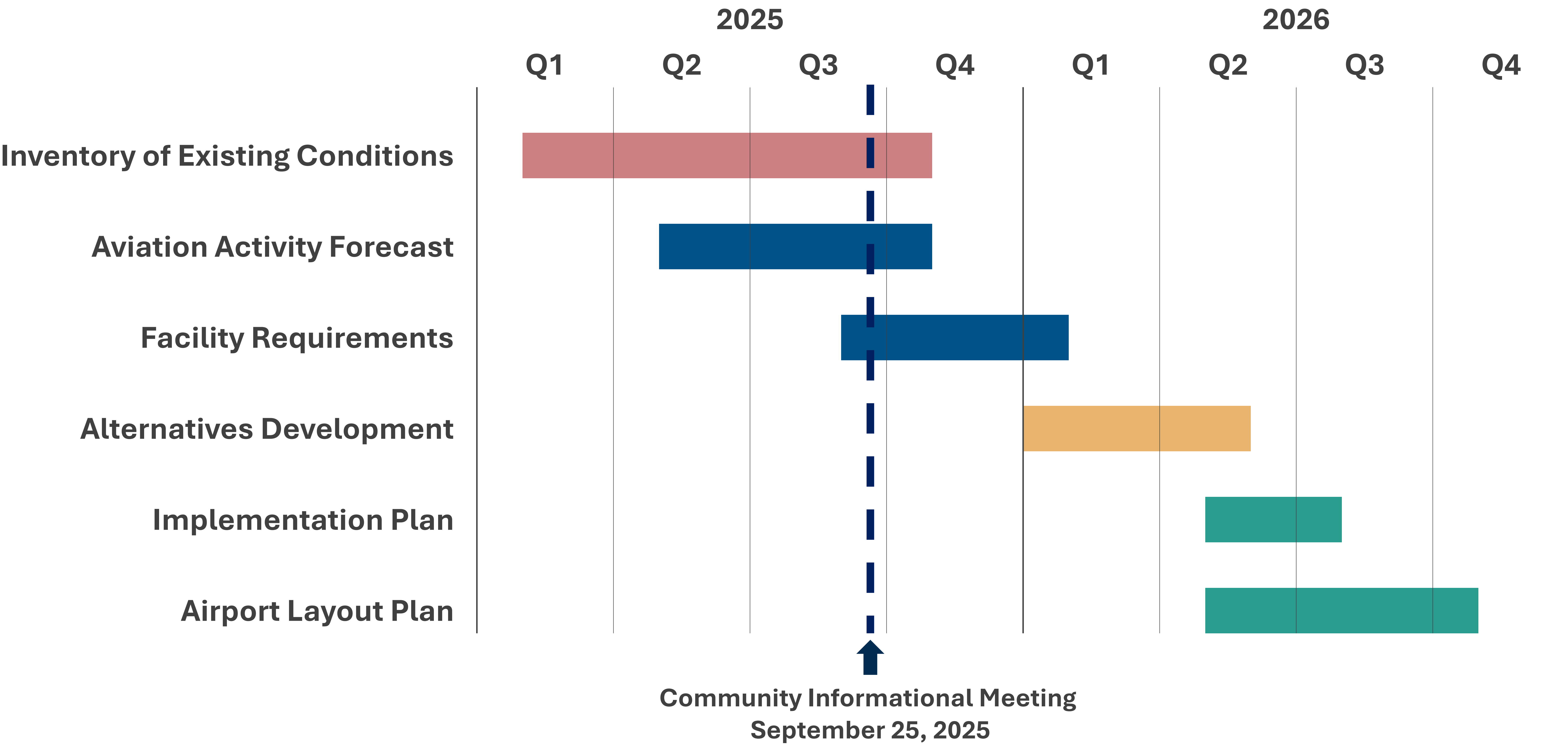
Develop and compare multiple development alternatives to identify the most effective solution based on safety, cost, environmental impact, and community needs

Implementation Plan and Airport Layout Plan

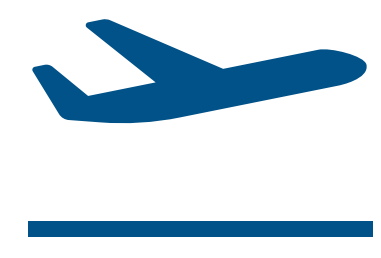


An outline of a phased approach for constructing improvements to reflect the airport's long-term vision and ensure FAA compliance

Master Plan Schedule



Master Plan Goals



Develop strategies to enhance airfield safety and improve landside connectivity



Expand and modernize terminal facilities to accommodate projected air service demand while preserving Kona's sense of place



Maximize land use potential through strategic non-aeronautical development that drives sustainable revenue growth



Enhance airport infrastructure to improve readiness and response capabilities for weather disruptions



Develop a phased and feasible approach for master plan projects that allow flexibility for adjustments based on future growth projections

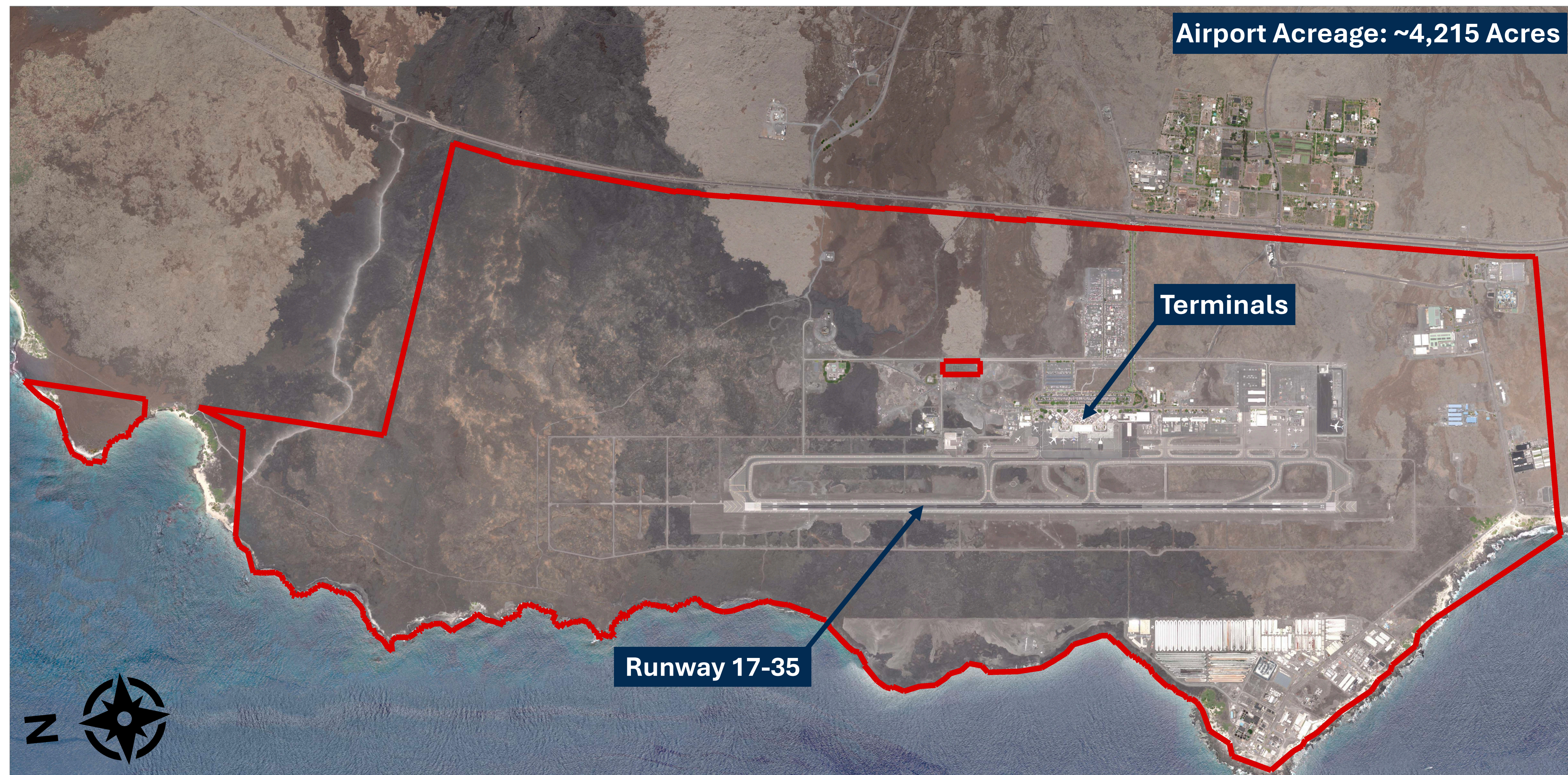


Engage with neighboring communities to ensure that the master plan supplements the Kona Community Development Plan

Inventory of Existing Conditions

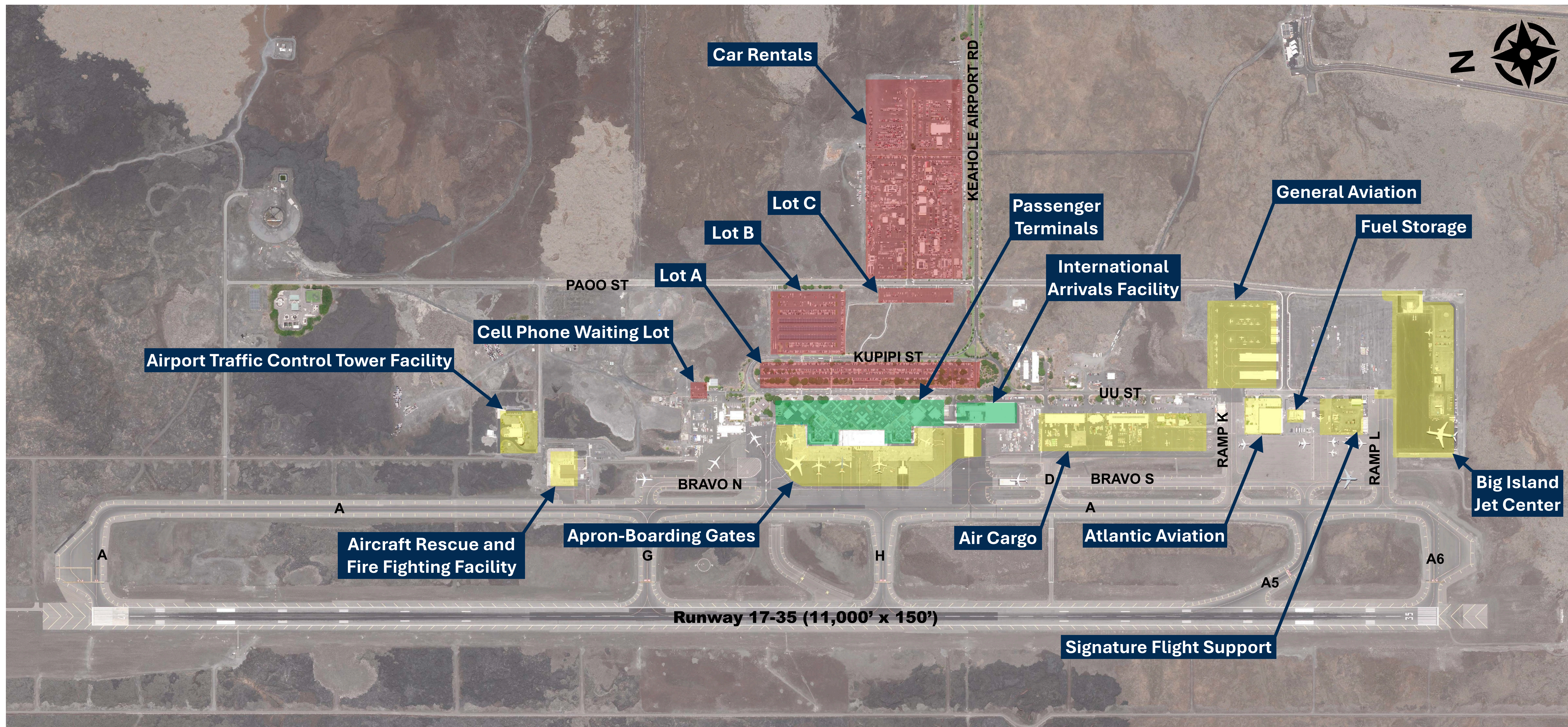
A thorough assessment of existing conditions provides a baseline for the airport master plan update. This includes evaluating current facilities, infrastructure, airfield layout, terminal capacity, access roads, and surrounding land uses. Documenting how the airport functions today helps identify operational strengths, constraints, and opportunities.

Airport Property Map

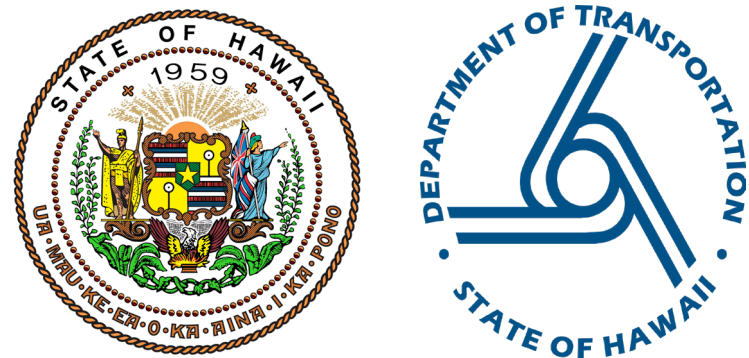


Legend: — Airport Property Line

Inventory of Existing Conditions



Legend: Airside Facilities Terminal Facilities Landside Facilities



What is an Aviation Activity Forecast?

An aviation activity forecast estimates how many passengers, cargo tonnages, and aircraft operations (takeoffs and landings) the airport might see in the future. Key components of an aviation activity forecast include:



**Passenger
Enplanements**



**Air Cargo
Tonnage**



**Aircraft
Operations**



**Based
Aircraft**

What is the Purpose of a Forecast?

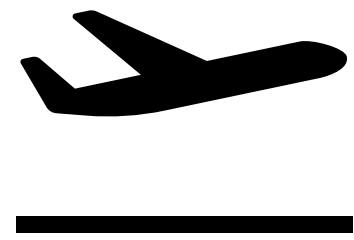
- **Plan for Future Demand:** Identify future airfield, terminal, and landside facility needs as part of the Master Plan Update
- **Submit Forecast to FAA for Approval:** As part of the Master Plan Update, the forecast is a critical component that requires formal approval by the Federal Aviation Administration (FAA)

Forecast of KOA Scheduled Passengers

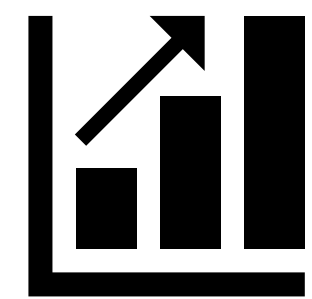
Passenger demand is closely tied to the economy and how easy and affordable it is to fly. Since most domestic travelers to KOA are visitors from the U.S. mainland, national economic trends play a big role. For international travelers, exchange rates often influence how many visitors come to KOA and other U.S. destinations.

Sources: FAA FY2024 TAF and HNTB analysis

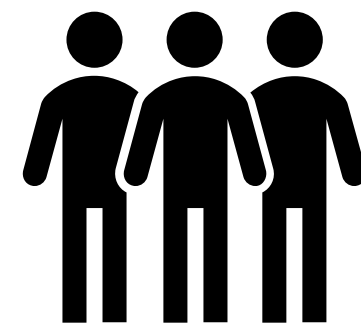
Domestic Travel Influences:



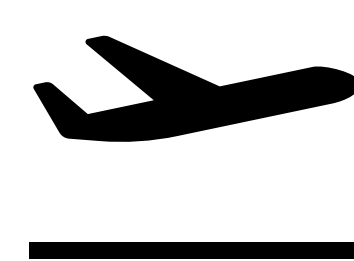
Airline Service



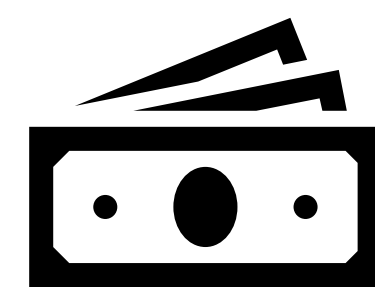
U.S. Economic Conditions



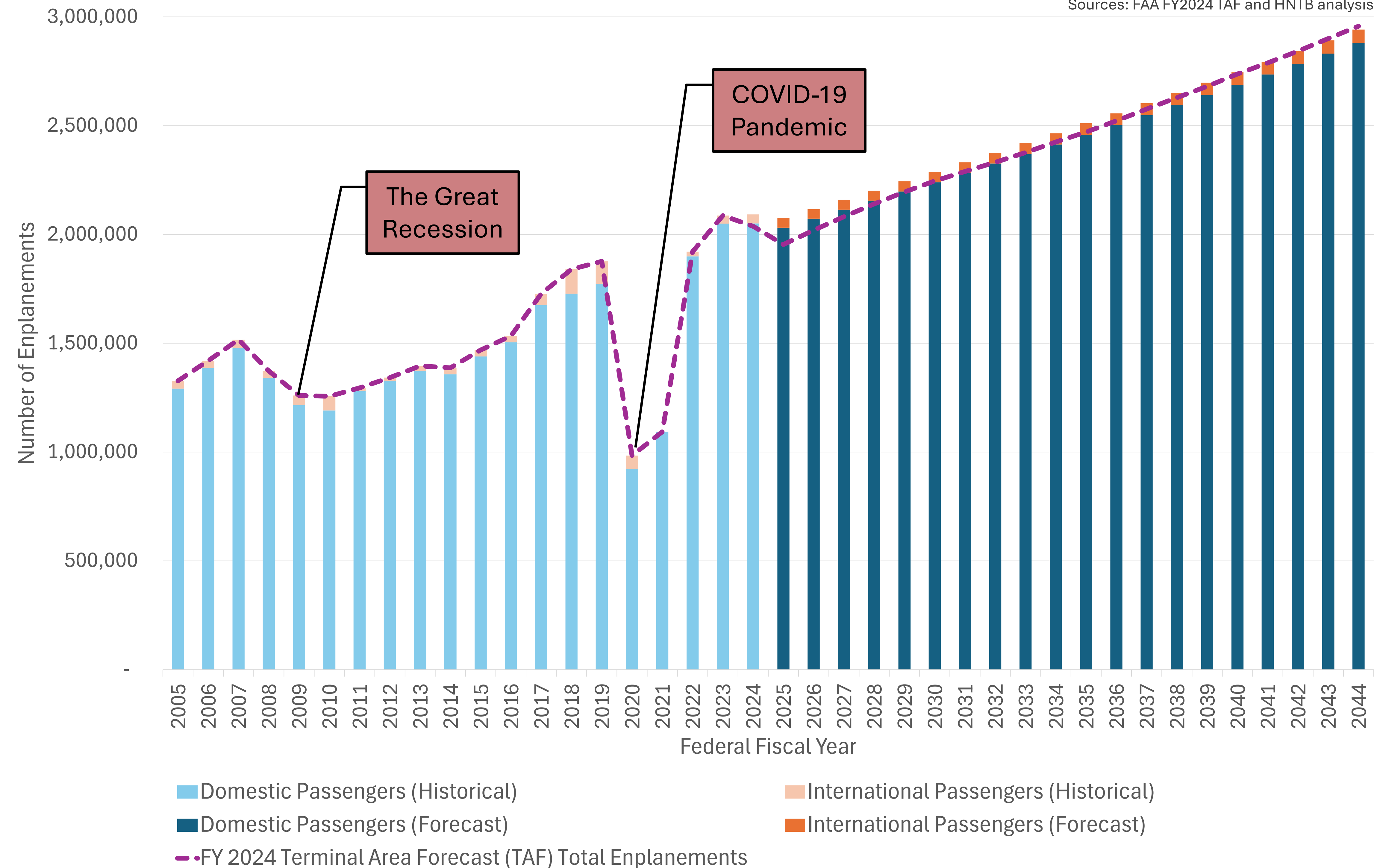
International Travel Influences:



Airline Service



Currency Exchange Rates



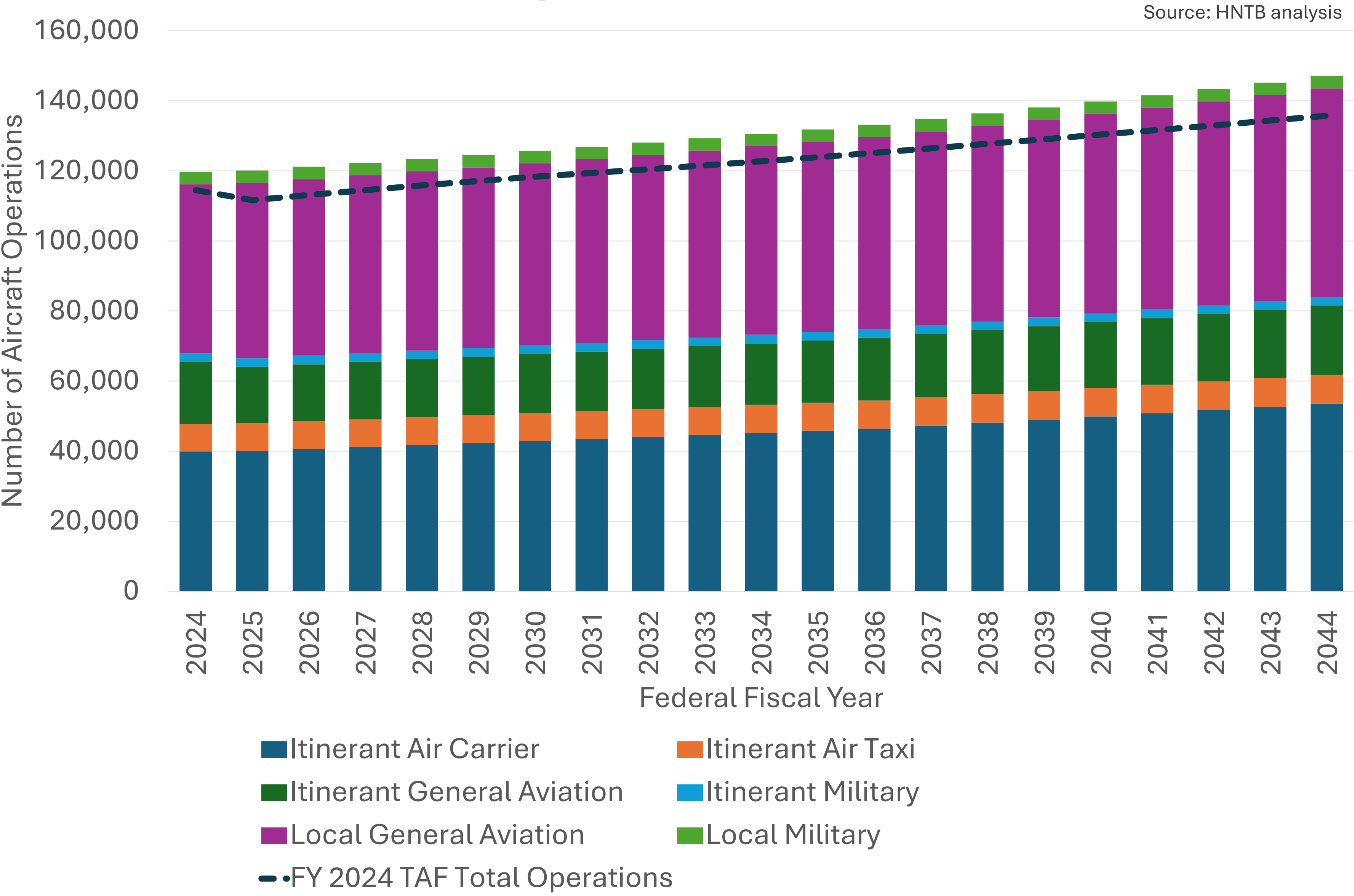
Forecasting enables KOA to plan and develop the appropriate facilities to accommodate projected demand.

Forecast of KOA Aircraft Operations and Based Aircraft

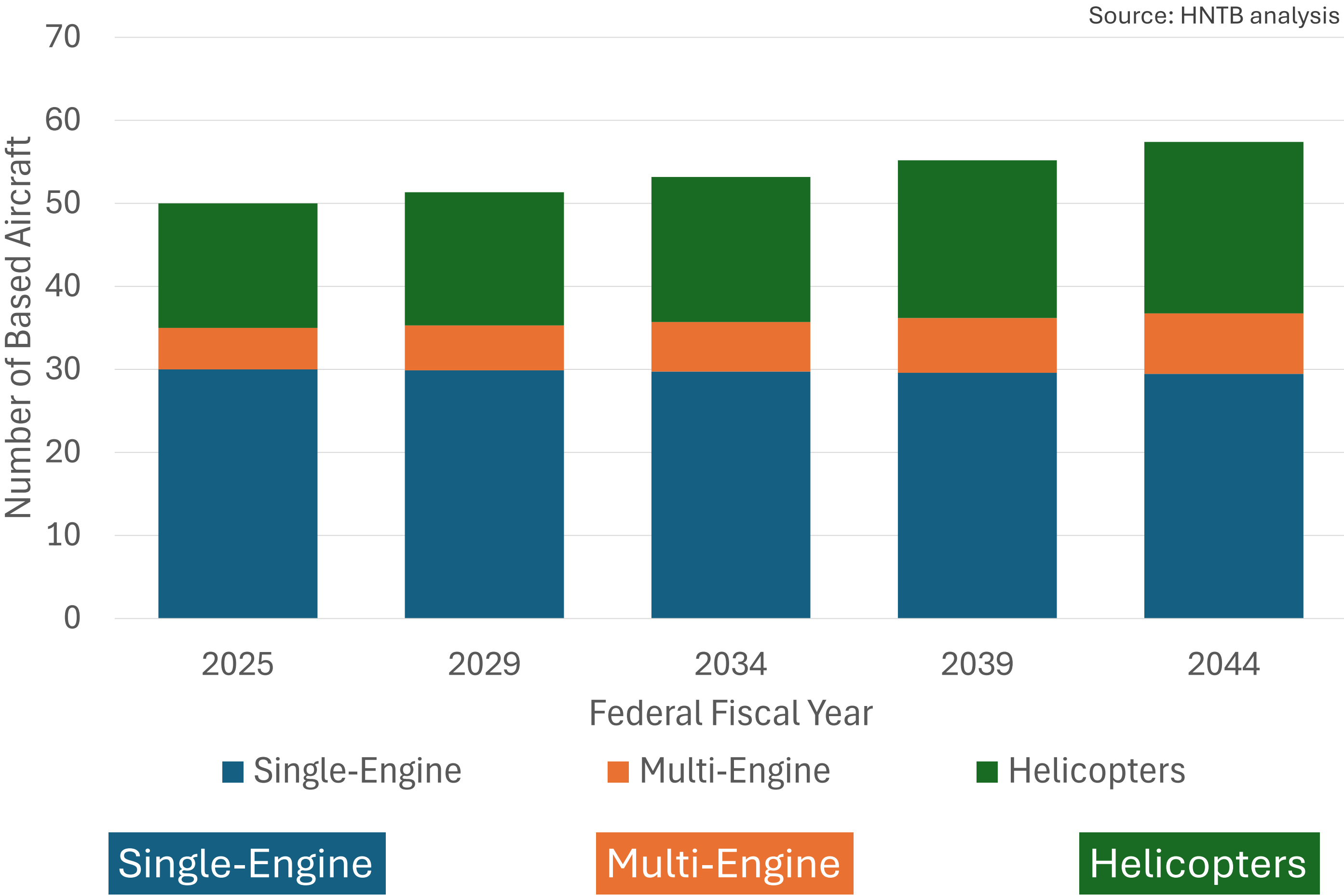
Aircraft operations include different types of flights, such as commercial passenger airlines, cargo carriers, small air taxis, general aviation aircraft, and military flights.

A based aircraft is an aircraft that is kept at KOA and used regularly throughout the year.

KOA Operations Forecast



KOA Based Aircraft Forecast



Key Terms

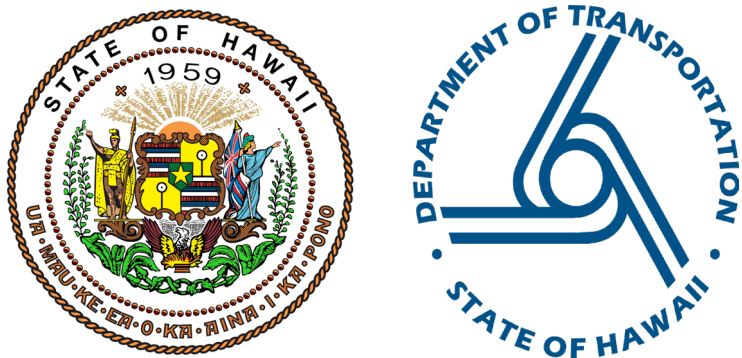
Itinerant Air Carrier: Flights between airports using large aircraft (over 60 seats or more than 18,000 pounds) to carry passengers or cargo for hire, including U.S. and foreign airlines.

Itinerant Air Taxi: Flights between airports using small aircraft (60 seats or less, or under 18,000 pounds) to carry passengers or cargo for hire.

Itinerant General Aviation: Flights between airports by civil aircraft that are not air carriers or air taxis.

Local Operations: Flights that stay near the airport, including training flights, or trips within 20 miles of the same airport.

TAF: The Terminal Area Forecast (TAF) is the official FAA forecast of aviation activity for U.S. airports.



Next Steps and Submit Comments

- Submit forecast for FAA's review and approval
- Proceed with development of facility requirements

Share your comments with us by choosing one of the following options:

- Submit a paper comment and place in comment box
- Go to koamasterplanupdate.com/ and submit a comment



Scan the QR code to visit our project website!

Thank you for attending the Hawaii Department of Transportation's **Community Informational Meeting**
for the Master Plan Update for **Ellison Onizuka Kona International Airport at Keahole (KOA)**